



wnproperties.co.uk

Long Lane, London Bridge

Ideally suited to the single professional and ideally located within one minute walk of Bermondsey Street is this exceptionally thoughtfully designed and furnished one bedroom third floor apartment. Set in a warehouse style block and located within 0.7 miles from London Bridge station the apartment also benefits from lift access and a covered allocated parking space. Available early May, 2024. EPC B.

01277 225191
lettings@wnproperties.co.uk



£1,900.00 pcm

Council Tax Band C



Communal entrance with lift to 3rd floor

Entrance Hall

Wood effect laminate flooring. Fitted storage, mirror.

Open-plan Living/Kitchen Area 20' 4" x 15' 4" (6.20m x 4.67m)

Fitted staging to living room area. Breakfast bar, wall mounted electric heaters, laminate style flooring, double glazed window's to rear. Open plan to kitchen comprising range of wall mounted and base level units, rolled edge work surface, appliances to include; electric single oven, electric four ring hob, cooker hood, freestanding fridge and washing machine. Built in storage cupboard. Tiled flooring.

Bedroom 10' 11" x 10' 3" (3.33m x 3.13m)

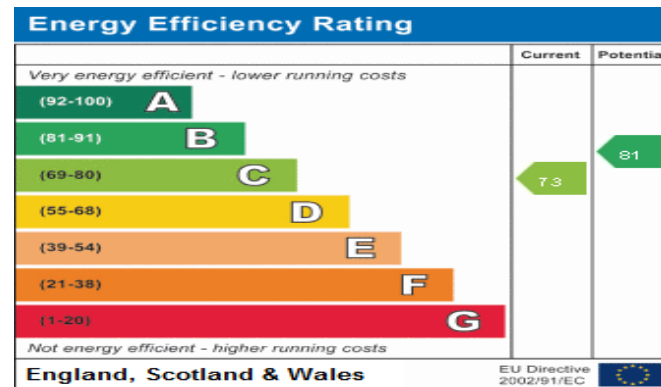
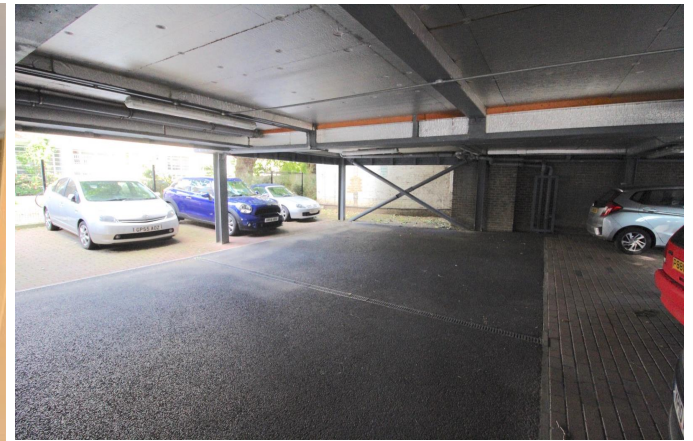
Fitted wardrobes and high level storage cabinets, laminate style flooring, concealed lighting, double glazed window.

Bathroom

White suite comprising; close coupled WC, pedestal wash hand basin, bidet and bath with shower mixer, mosaic tiled walls, tiled floor, fitted mirror to two walls, heated towel rail.

Exterior

Covered parking area gives allocated parking for one vehicle, communal garden area, being mostly laid to lawn, access to secure bicycle storage.



Address:
Long Lane

HOLDING DEPOSIT

A one week holding deposit is required to secure this property. Please ask for a copy of our 'Guide for Tenants' for a full list of costs applicable to this or any of our properties. Please note your holding deposit is at risk if you withdraw from the transaction or do not disclose something that affects your ability to pass references.